



VIVAX
METROTECH



VM Series Locators

- Compact - Lightweight - Reliable
- Power Mode
- Two Active Frequencies
- Pushbutton Depth
- 1 Watt Transmitter



Distributed by TransNet NZ Limited

www.transnet.co.nz



The VM Series is a range of locators for those demanding performance and value for money.

Pipe & Cable Location

VM-480B

One of the original Metrotech products, the VM-480B is the latest version of the traditional split box locator. It is used extensively as a low cost proven way of locating:

- Gas Pipes
- Water Pipes
- Municipal Applications



VM-550 & VM-560

Two totally new products - the VM-550 & VM-560 provide superior performance, more features in a light weight ergonomic package.

Features include:

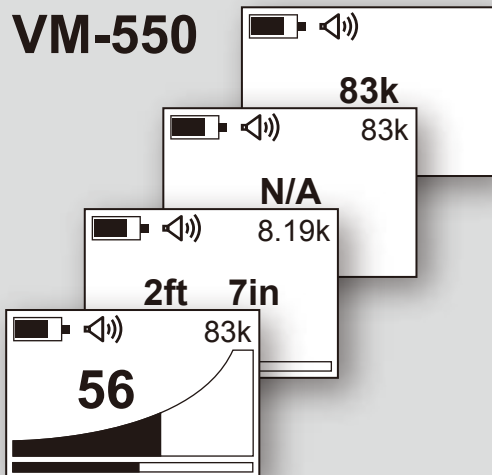
	VM-550	VM-560
Power Mode	✓	✓
Metal Locate Mode	✗	✗
2 Active Frequencies	✓ 8.19kHz, 83kHz	✓ 8.19kHz, 480kHz
Push Button Depth	✓	✓
1 Watt Transmitter	✓ 8.19kHz, 83kHz	✓ 8.19kHz, 480kHz

Useful for all cable & pipe location over short to moderate distances.

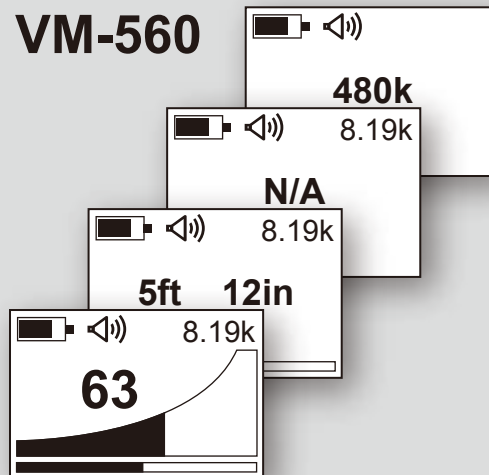


More Features...Lower cost of ownership.

VM-550



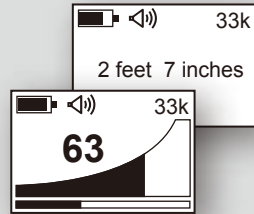
VM-560



Sonde Location

VM-540

The first of a new generation of purpose built Sonde Locators. This instrument is designed for daily use and is compatible with many Sondes & CCTV systems manufactured by others as well as those from Vivax-Metrotech.

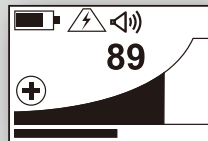


Ferrous Metal Detector

VM-880

The VM-880 is the latest generation of the ever popular 880 ferrous metal locator. Enhancing existing features and adding new, it incorporates the following to enable fast location of buried or hidden assets:

- One Touch Sensitivity
- Audio Signal Strength
- 50/60Hz Proximity Warning
- Field Polarity Indication
- Visual Signal Strength
- Unique Screen Inversion Feature





Sondes (for VM-540 only)

D18-33-SR44



- 0.75" (18mm) x 3.1" (80mm) long, 33kHz, range 12ft (4m)
- 2 x button cell batteries

D38-33-AA



- 1.5" (38mm) x 4.1" (105mm) long, 33kHz, range 15ft (5m)
- 1 x AA battery

D64-33-LR61



- 2.5" (64mm) x 7.3" (186mm) long, 33kHz, range 24ft (8m)
- 1 x LR61 battery

D23F-512-AA / D23F-640-AA



- 1" (23mm) x 18" (456mm) long, range 20ft (7m)
- "Flexible (3 section) Sonde with optional 512Hz or 640Hz for use incast iron pipes"
- 1 x AA battery



Clamp (for VM-560 & VM-550 only)

To apply the transmitter signal to a target cable when safe access to the conductor is not possible.

- Dia. 2" (50mm)
- Dia. 4" (100mm)
- Dia. 5" (125mm)



TransNet NZ Limited

78 Cryers Road
East Tamaki
Auckland, 2013
NEW ZEALAND

Phone: + 64 9 274 3340
Fax: +64 9 274 5490
Email: sales@transnet.co.nz



Disclaimer: Product and accessory specification and availability information is subject to change without prior notice. V2.3 (Nov 2014)